

## Monthly Weather Summary in Thailand December 2016

The continuation of high pressure area from China which extended to cover upper Thailand almost the month caused cool and cold weather with dry conditions over upper Thailand for most of the month, particularly in northern and northeastern parts where cool weather were experienced nearly the whole areas with cold weather in several places during the middle and late of December that high pressure area covering upper Thailand was active. In the mountainous areas and mountaintop the weather was cold and very cold throughout the month with frost occurred in some areas during the middle month. For southern part, plentiful rainfall was mainly occurred along the east coast due to the influence of the rather active northeast monsoon prevailing over southern part and the Gulf of Thailand almost this month and the active low pressure cell in the lower South China Sea moved to cover southern part in some periods. The monthly mean temperature of 25.5 °C was 1.3 °C above the 1981-2010 normal whereas the total rainfall recorded in the month was 53.7mm (111%) above the normal. However monthly rainfall was below normal in northern part 2.3 mm (72%), northeastern part 1.5 mm (57%), central part 0.4 mm(92%) and eastern part 4.4 mm (46%) while it was inversely above normal in southern part (east coast) and southern part (west coast) 565.6 mm (139%) and 142.6 mm (90%) respectively.

**1 – 10 December:** Under the influence of the high pressure area which was active during early period, the northern and northeastern parts of Thailand experienced general cool weather and cold weather in some areas almost the whole period whereas cool weather in some areas for the rest parts. The minimum temperature of 13.0 °C was recorded at Umphang in Tak province on December 3 and 6.0 °C over the area of mountain tops at Kew Mae Pan, Chom Thong in Chiang Mai province on December 4. Scanty rainfall in upper Thailand, the maximum daily rainfall of 1.6 mm at Na Chaluai in Ubon Ratchathani province on December 6. With the active low pressure cell covered the lower southern Thailand and Malaysia during the first half of the period accompanied with the northeast monsoon over southern part and the Gulf of Thailand relatively strengthen during mentioned period, southern Thailand received abundant rainfall almost the whole period especially fairly widespread to widespread rain with heavy to very heavy rainfall in several areas during the first half of the period. The maximum daily rainfall was 330.5 mm at Hua Sai in Nakhon Si Thammarat province on December 2. Flash floods were reported at Surat Thani, Nakhon Si Thammarat, Phattalung, Songkhla, Pattani and Narathiwat provinces during the first half of the period.

**11 – 20 December:** The high pressure area still covered upper Thailand and another rather active high pressure area extended its ridge to cover the mentioned area associated with the moderate northeast monsoon which prevailed over southern part and the Gulf of Thailand strengthened since the middle period. These conditions caused generally cool weather nearly the whole areas of the northern and northeastern parts almost the period with cold weather in some areas of the upper portion and very cold in the area of mountaintop whereas cool weather in several areas of the central and eastern parts mainly during early and late period. The lowest minimum temperature was 11.9 °C at Umphang in Tak province on December 13

and 3.5 °C over the area of mountaintop at Kew Mae Pan, Chom Thong in Chiang Mai on December 11. Frost occurred at Doi Inthanon in Chiang Mai on December 14. Isolated to scattered rain became in upper Thailand with heavy rainfall in some areas during middle period as the low pressure cell in the South China Sea moved to cover upper Vietnam and Cambodia before moving to southern part and the Gulf of the Thailand on December 15 – 16. The maximum daily rainfall of 51.5 mm was measured at Laem Chabang in Chonburi province on December 14. In southern part, isolated light to moderate rain during the first half of the period after that rainfall relatively increased to scattered to fairly widespread rain with heavy rainfall in several areas and very heavy rainfall in some areas was found along the east coast. The highest daily rainfall was 253.4 mm at Singhanakhon in Songkhla province on December 20.

**21 – 31 December:** The persistence of moderate high pressure area couple with the arrival of active high pressure area during second half of the periods brought appreciably cooler weather and falling temperatures in upper Thailand mainly in the northern and northeastern parts during late period. The lowest minimum temperature was 10.7 °C at Agrometeorological Station in Nakhon Phanom province on December 29 and 5.0 °C over the area of mountaintop at Phuluang Wildlife Sanctuary, Phu Rua in Loei province on December 30. For rainfall, isolated light to moderate rain occurred in upper Thailand for few days with the maximum daily rainfall of 13.3 mm at Wat Nual Jan, Khet Bueng Kum in Bangkok on December 26. Rainfall in southern part was enhanced by the low pressure cell which covered the lower southern Thailand and Malaysia during early period and last day of the period couple with the northeast monsoon which prevailed over southern part and the Gulf of Thailand strengthened during the second half of the period, with scattered to fairly widespread rain almost the whole period and heavy to very heavy rainfall in some areas along the east coast during early and late period. The maximum daily rainfall was 177.0 mm at Chana in Songkhla province on December 31.

---

**Note :** Rainfall, temperatures and natural disasters in this report was updated up to January 11, 2017.

Climatological Center  
Meteorological Development Bureau  
Meteorological Department

Monthly Current Report  
Rainfall and Accumulative Rainfall  
December 2016

Northern Thailand

Station	Temperature (°c)		Rainfall (mm)		Accumulative rainfall (mm) Since 1 January	
	Mean	Above or below normal	Actual	Above or below normal	Actual	Above or below normal
Chiang Rai	21.7	2.3	0.3	-13.7	1875.7	185.2
Mae Hong Son	22.6	1.7	0.0	-10.4	1119.8	-172.6
Phayao	21.9	1.9	7.5	-3.4	1080.0	-57.0
Chiang Mai	24.0	2.6	6.0	-9.9	1179.3	48.7
Tha Wang Pha	21.9	1.4	2.5	-8.5	1698.0	289.9
Nan	23.0	2.0	0.6	-8.0	1412.6	178.5
Lamphun	23.4	2.1	6.5	-0.9	1313.3	309.5
Lampang	23.5	1.9	4.1	-2.9	1105.5	60.0
Mae Sariang	23.1	2.2	0.0	-7.6	982.3	-153.5
Phrae	23.7	1.9	10.8	3.0	1394.3	279.5
Uttaradit	25.6	1.9	1.4	-3.6	1358.0	-13.6
Bhumibol Dam	24.1	1.4	0.0	-7.2	1122.3	78.9
Tak	24.7	1.7	0.8	-4.3	1150.5	89.4
Mae Sot	24.6	2.6	0.0	-5.9	1187.3	-280.3
Umphang	21.7	1.9	0.0	-5.1	1385.8	-75.5
Phitsanulok	25.8	1.5	0.2	-10.9	1380.8	63.8
Lom Sak	25.0	1.2	2.9	-1.6	1089.2	46.1
Phetchabun	25.7	2.2	0.8	-7.0	1041.4	-92.0
Wichian Buri	26.1	1.3	0.0	-4.3	1085.6	-135.0
Kamphaeng Phet	25.6	1.5	2.3	-4.4	1168.8	-135.8
Over the area	23.9	1.9	2.3	-5.9 -72%	1256.5	25.6 2%

Northeastern Thailand

Station	Temperature (°c)		Rainfall (mm)		Accumulative rainfall (mm) Since 1 January	
	Mean	Above or below normal	Actual	Above or below normal	Actual	Above or below normal
Nong Khai	24.1	2.0	2.6	-1.7	2031.4	423.2
Loei	22.7	1.6	0.6	-8.1	1407.3	166.4
Udon Thani	23.8	1.4	6.1	3.2	1477.2	58.8
Nakhon Phanom	23.8	1.8	1.8	-3.0	2383.1	36.3
Sakon Nakhon	23.5	1.6	3.6	-2.0	1349.3	-295.7
Mukdahan	23.8	1.6	1.6	-1.0	1308.7	-171.3
Khon Kaen	24.3	1.3	0.7	-3.4	1368.1	121.3
Kosum Phisai	24.8	1.3	0.0	-3.1	1729.8	466.1
Roi Et	24.7	1.8	0.6	-1.5	1488.0	146.0
Chaiyaphum	25.2	1.4	0.0	-4.1	1272.5	135.3
Ubon Ratchathani	25.0	1.3	6.6	5.6	1905.7	324.0
Tha Tum	25.4	1.7	0.0	-1.0	1361.2	-26.7
Surin	25.0	1.4	0.0	-1.9	1406.2	-26.0
Nakhon Ratchasima	25.2	1.6	0.0	-2.7	1222.6	151.1
Chok Chai	24.9	1.3	0.0	-3.2	1003.6	-71.2
Nang Rong	24.4	0.8	0.2	-3.2	1299.2	105.3
Over the area	24.4	1.5	1.5	-2.0 -57%	1500.9	96.4 7%

- NOTES :
- 1) Mean temperature is the average of daily dry-bulb temperature
  - 2) "T" is trace, rainfall amount less than 0.1 mm.
  - 3) "blank" is incomplete data.
  - 4) Temperature and rainfall are preliminary data.

Monthly Current Report  
Rainfall and Accumulative Rainfal  
December 2016

Central Thailand

Station	Temperature ( °c)		Rainfall (mm)		Accumulative rainfall (mm) Since 1 January	
	Mean	Above or below normal	Actual	Above or below normal	Actual	Above or below normal
Nakhon Sawan	25.8	1.2	0.4	-4.2	1538.8	389.1
Bua Chum	25.3	1.0	0.0	-2.5	1140.1	54.8
Lop Buri	27.2	1.4	0.0	-4.5	1140.2	15.1
Suphan Buri	26.6	1.6	0.6	-6.1	1090.9	115.5
Thong Pha Phum	25.4	1.5	1.0	-3.7	1341.8	-444.7
Kanchanaburi	26.8	1.9	1.2	-5.0	1194.8	138.4
Bangkok Airport	27.5	1.1	0.0	-6.1	1680.9	306.0
Bangkok Metropolis	28.0	1.5	0.0	-6.3	1998.5	350.3
Over the area	26.6	1.4	0.4	-4.8 -92%	1390.8	115.6 9%

Eastern Thailand

Station	Temperature ( °c)		Rainfall (mm)		Accumulative rainfall (mm) Since 1 January	
	Mean	Above or below normal	Actual	Above or below normal	Actual	Above or below normal
Prachin Buri	27.8	1.6	0.0	-5.0	1726.9	-96.4
Kabin Buri	26.2	0.6	0.4	-3.5	1704.3	107.5
Aranyaprathet	26.9	1.6	5.0	0.2	985.8	-359.0
Chon Buri	27.8	1.3	0.0	-5.5	1463.2	167.6
Ko Sichang	27.0	0.8	1.8	-6.7	1039.9	-179.0
Pattaya	27.0	1.1	3.4	-4.9	1378.2	267.5
Sattahip	26.5	0.5	5.1	-5.4	1464.1	197.5
Rayong	27.0	1.0	0.6	-5.3	1308.5	-74.7
Chanthaburi	27.1	1.1	0.8	-6.0	3449.4	455.2
Khlong Ya	27.8	1.0	27.1	5.8	5733.8	888.0
Over the area	27.1	1.0	4.4	-3.7 -46%	2025.4	137.2 7%

- NOTES :
- 1) Mean temperature is the average of daily dry-bulb temperature
  - 2) "T" is trace, rainfall amount less than 0.1 mm.
  - 3) "blank" is incomplete data.
  - 4) Temperature and rainfall are preliminary data.

Monthly Current Report  
Rainfall and Accumulative Rainfal  
December 2016

Southern Thailand, east coast

Station	Temperature ( °c)		Rainfall (mm)		Accumulative rainfall (mm) Since 1 January	
	Mean	Above or below normal	Actual	Above or below normal	Actual	Above or below normal
Phetchaburi	26.7	1.3	11.3	-0.3	1133.0	145.7
Hua Hin	27.5	1.7	2.9	-5.0	832.6	-122.5
Prachuap Khiri Khan	26.7	1.2	21.4	6.4	1154.0	62.2
Chumphon	26.1	0.8	509.8	386.5	1782.4	-90.3
Surat Thani	25.9	0.4	580.3	450.9	1532.4	-89.6
Ko Samui	26.7	0.1	808.8	598.5	1771.0	-189.1
Nakhon Si Thammarat	25.9	0.2	1120.0	668.3	2465.8	-30.7
Songkhla	26.9	0.1	906.5	461.8	2191.4	124.7
Hat Yai Airport	26.1	0.5	414.0	146.3	1354.6	-371.7
Pattani Airport	26.5	0.6	638.8	260.5	1779.2	-85.9
Narathiwat	26.3	0.4	1207.6	642.0	2730.2	269.5
Over the area	26.5	0.7	565.6	328.7 139%	1702.4	-34.5 -2%

Southern Thailand, west coast

Station	Temperature ( °c)		Rainfall (mm)		Accumulative rainfall (mm) Since 1 January	
	Mean	Above or below normal	Actual	Above or below normal	Actual	Above or below normal
Ranong	26.4	0.1	141.7	96.2	4924.9	856.5
Takua Pa	27.0	0.6	59.6	-2.1	5883.8	2226.2
Phuket	28.1	0.5	42.4	-30.0	2552.3	332.8
Phuket Airport	27.4	0.7	66.3	-1.1	3892.0	1417.0
Ko Lanta	27.3	0.4	103.0	47.4	2591.3	414.7
Trang Airport	26.6	0.4	388.8	263.4	2657.0	508.5
Satun	27.2	0.2	196.4	99.5	1940.0	-349.9
Over the area	27.1	0.4	142.6	67.6 90%	3491.6	772.3 28%

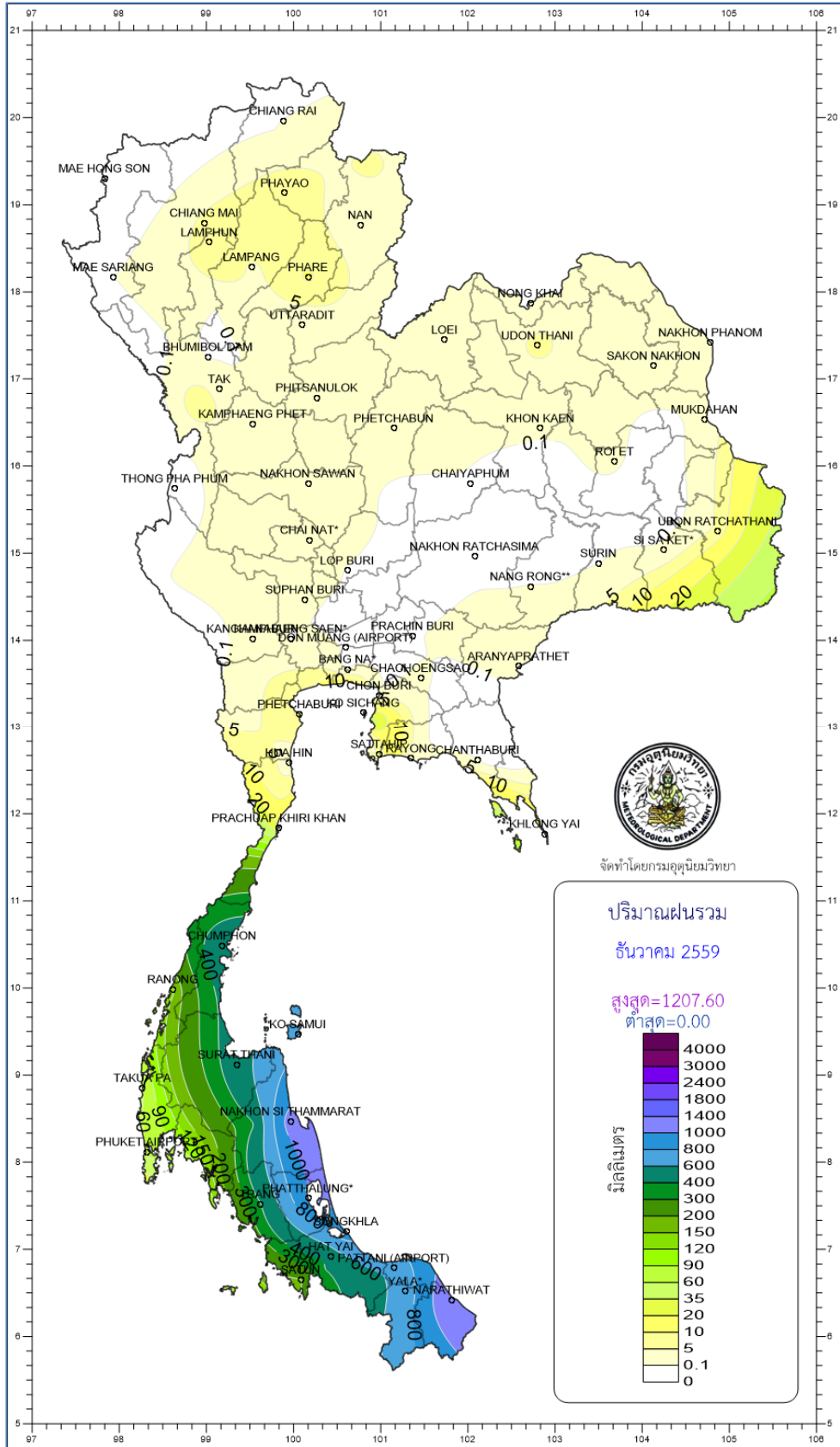
- NOTES :
- 1) Mean temperature is the average of daily dry-bulb temperature
  - 2) "T" is trace, rainfall amount less than 0.1 mm.
  - 3) "blank" is incomplete data.
  - 4) Temperature and rainfall are preliminary data.

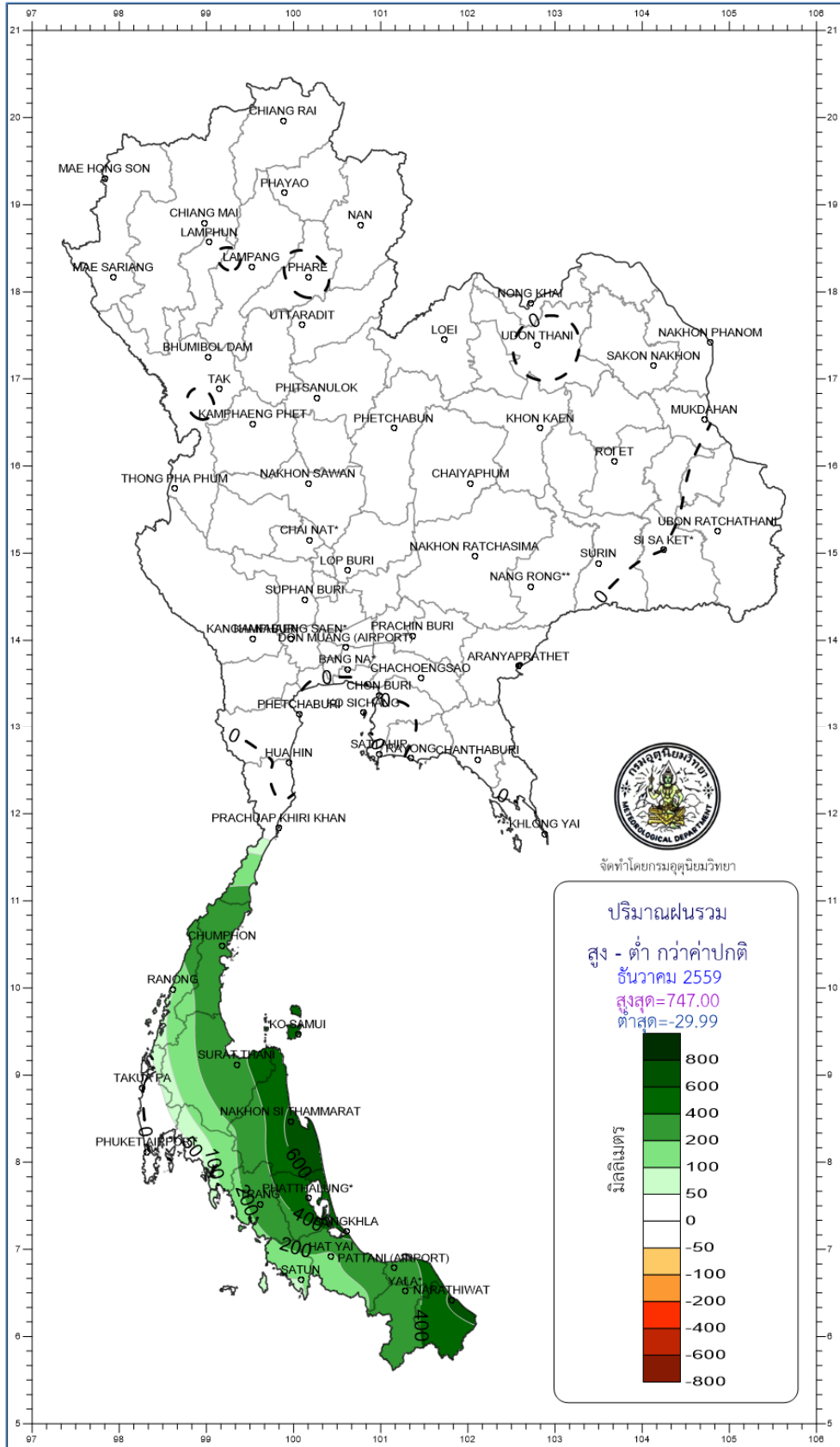
**Monthly Current Report**

**December 2016**

Region	Station	Temperature ( °c)		Rainfall (mm)		Accumulative rainfall (mm Since 1 January	
		Mean	Above or below normal	Actual	Above or below normal	Actual	Above or below normal
North	Chiang Rai	21.7	2.3	0.3	-13.7	1875.7	185.2
	Mae Hong Son	22.6	1.7	0.0	-10.4	1119.8	-172.6
	Phayao	21.9	1.9	7.5	-3.4	1080.0	-57.0
	Chiang Mai	24.0	2.6	6.0	-9.9	1179.3	48.7
	Tha Wang Pha	21.9	1.4	2.5	-8.5	1698.0	289.9
	Nan	23.0	2.0	0.6	-8.0	1412.6	178.5
	Lamphun	23.4	2.1	6.5	-0.9	1313.3	309.5
	Lampang	23.5	1.9	4.1	-2.9	1105.5	60.0
	Mae Sariang	23.1	2.2	0.0	-7.6	982.3	-153.5
	Phrae	23.7	1.9	10.8	3.0	1394.3	279.5
	Uttaradit	25.6	1.9	1.4	-3.6	1358.0	-13.6
	Bhumibol Dam	24.1	1.4	0.0	-7.2	1122.3	78.9
	Tak	24.7	1.7	0.8	-4.3	1150.5	89.4
	Mae Sot	24.6	2.6	0.0	-5.9	1187.3	-280.3
	Umphang	21.7	1.9	0.0	-5.1	1385.8	-75.5
	Phitsanulok	25.8	1.5	0.2	-10.9	1380.8	63.8
	Lom Sak	25.0	1.2	2.9	-1.6	1089.2	46.1
Phetchabun	25.7	2.2	0.8	-7.0	1041.4	-92.0	
Wichian Buri	26.1	1.3	0.0	-4.3	1085.6	-135.0	
Kamphaeng Phet	25.6	1.5	2.3	-4.4	1168.8	-135.8	
Northeast	Nong Khai	24.1	2.0	2.6	-1.7	2031.4	423.2
	Loei	22.7	1.6	0.6	-8.1	1407.3	166.4
	Udon Thani	23.8	1.4	6.1	3.2	1477.2	58.8
	Nakhon Phanom	23.8	1.8	1.8	-3.0	2383.1	36.3
	Sakon Nakhon	23.5	1.6	3.6	-2.0	1349.3	-295.7
	Mukdahan	23.8	1.6	1.6	-1.0	1308.7	-171.3
	Khon Kaen	24.3	1.3	0.7	-3.4	1368.1	121.3
	Kosum Phisai	24.8	1.3	0.0	-3.1	1729.8	466.1
	Roi Et	24.7	1.8	0.6	-1.5	1488.0	146.0
	Chaiyaphum	25.2	1.4	0.0	-4.1	1272.5	135.3
	Ubon Ratchathani	25.0	1.3	6.6	5.6	1905.7	324.0
	Tha Tum	25.4	1.7	0.0	-1.0	1361.2	-26.7
	Surin	25.0	1.4	0.0	-1.9	1406.2	-26.0
Nakhon Ratchasima	25.2	1.6	0.0	-2.7	1222.6	151.1	
Chok Chai	24.9	1.3	0.0	-3.2	1003.6	-71.2	
Nang Rong	24.4	0.8	0.2	-3.2	1299.2	105.3	
Central	Nakhon Sawan	25.8	1.2	0.4	-4.2	1538.8	389.1
	Bua Chum	25.3	1.0	0.0	-2.5	1140.1	54.8
	Lop Buri	27.2	1.4	0.0	-4.5	1140.2	15.1
	Suphan Buri	26.6	1.6	0.6	-6.1	1090.9	115.5
	Thong Pha Phum	25.4	1.5	1.0	-3.7	1341.8	-444.7
	Kanchanaburi	26.8	1.9	1.2	-5.0	1194.8	138.4
	Bangkok Airport	27.5	1.1	0.0	-6.1	1680.9	306.0
	Bangkok Metropolis	28.0	1.5	0.0	-6.3	1998.5	350.3
East	Prachin Buri	27.8	1.6	0.0	-5.0	1726.9	-96.4
	Kabin Buri	26.2	0.6	0.4	-3.5	1704.3	107.5
	Aranyaprathet	26.9	1.6	5.0	0.2	985.8	-359.0
	Chon Buri	27.8	1.3	0.0	-5.5	1463.2	167.6
	Ko Sichang	27.0	0.8	1.8	-6.7	1039.9	-179.0
	Pattaya	27.0	1.1	3.4	-4.9	1378.2	267.5
	Sattahip	26.5	0.5	5.1	-5.4	1464.1	197.5
	Rayong	27.0	1.0	0.6	-5.3	1308.5	-74.7
	Chanthaburi	27.1	1.1	0.8	-6.0	3449.4	455.2
Khlong Yai	27.8	1.0	27.1	5.8	5733.8	888.0	
South (East Coast)	Phetchaburi	26.7	1.3	11.3	-0.3	1133.0	145.7
	Hua Hin	27.5	1.7	2.9	-5.0	832.6	-122.5
	Prachuap Khiri Khan	26.7	1.2	21.4	6.4	1154.0	62.2
	Chumphon	26.1	0.8	509.8	386.5	1782.4	-90.3
	Surat Thani	25.9	0.4	580.3	450.9	1532.4	-89.6
	Ko Samui	26.7	0.1	808.8	598.5	1771.0	-189.1
	Nakhon Si Thammarat	25.9	0.2	1120.0	668.3	2465.8	-30.7
	Songkhla	26.9	0.1	906.5	461.8	2191.4	124.7
	Hat Yai Airport	26.1	0.5	414.0	146.3	1354.6	-371.7
	Pattani Airport	26.5	0.6	638.8	260.5	1779.2	-85.9
Narathiwat	26.3	0.4	1207.6	642.0	2730.2	269.5	
South (West Coast)	Ranong	26.4	0.1	141.7	96.2	4924.9	856.5
	Takua Pa	27.0	0.6	59.6	-2.1	5883.8	2226.2
	Phuket	28.1	0.5	42.4	-30.0	2552.3	332.8
	Phuket Airport	27.4	0.7	66.3	-1.1	3892.0	1417.0
	Ko Lanta	27.3	0.4	103.0	47.4	2591.3	414.7
	Trang Airport	26.6	0.4	388.8	263.4	2657.0	508.5
	Satun	27.2	0.2	196.4	99.5	1940.0	-349.9
	Over the area	25.5	1.3	101.9	53.7	1718.0	130.3
					111%		8%

NOTES : 1) Mean temperature is the average of daily dry-bulb temperature  
2) "T" is trace, rainfall amount less than 0.1 mm.  
3) "blank" is incomplete data.  
4) Temperature and rainfall are preliminary data.

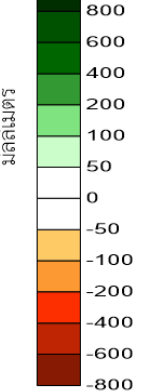




จัดทำโดยกรมอุตุนิยมวิทยา

**ปริมาณฝนรวม**

สูง - ต่ำ กว่าค่าปกติ  
 ธันวาคม 2559  
 สูงสุด=747.00  
 ต่ำสุด=-29.99



มิลลิเมตร

800  
600  
400  
200  
100  
50  
0  
-50  
-100  
-200  
-400  
-600  
-800

จัดทำโดยกรมอุตุนิยมวิทยา



